

AVAILABLE



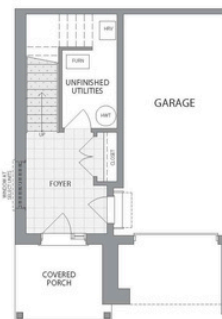
POET AND PERTH THE NEST END

PRICE **\$519,900**

SQUARE FOOTAGE **1,400 SQ FT**

PROPERTY FEATURES

- LIVING/DINING
- 1.5 BATHROOM
- 2 BEDROOM
- BALCONY



MAIN FLOOR PLAN



SECOND FLOOR PLAN



THIRD FLOOR PLAN

 poetperth@heritagehomes.com  519-498-4111

WWW.REIDSHERITAGEHOMES.COM

All drawings are Artist's Concepts only and may vary slightly from the final product. E&O.E. The home shown may be the reverse of the home purchased. Actual useable floor space may vary from stated area, and square footage has been calculated based on useable living space according to TARION rules and does not include garage or basement areas (unless otherwise stated). More detailed information is set out in the Agreement of Purchase and Sale. Drawings may show optional features which may not be included in the base Purchase Price. Bulkheads and box outs may be required as chases for plumbing and mechanical. Garage man door, if applicable, location may vary subject to grade. In an ongoing review of our homeowner's needs, changes may have been incorporated into our "New Home Features" and construction techniques. All plans and specifications are subject to reasonable modification, as necessary, at the discretion of the Vendor, without notice. © 03/2026

The logo for Heritage Homes, consisting of the letters 'H', 'R', and 'H' in a stylized, serif font.