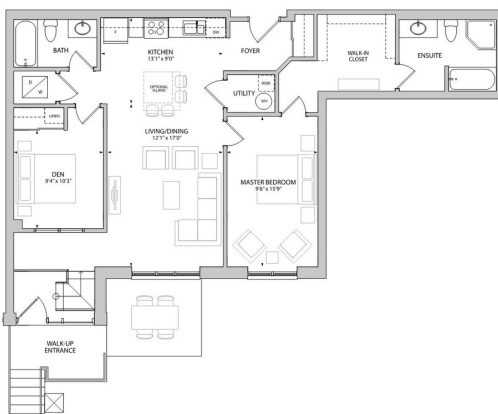


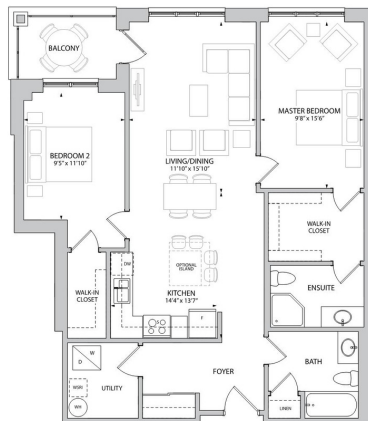
ONLY 3 SUITES LEFT!

URBAN CONDOS WITH
GREAT CONNECTIONS.
EVERYTHING YOU NEED A
SHORT WALK AWAY.

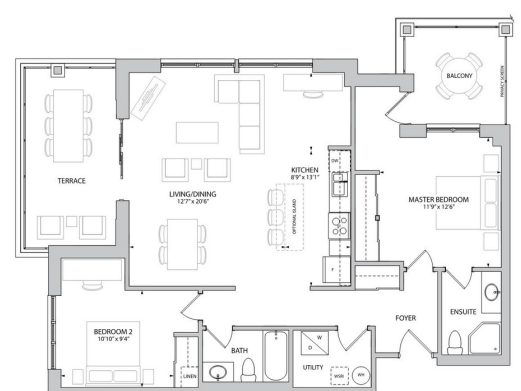
COMMONWEALTH DR,
KITCHENER
FROM \$479,900



Suite 108 | Dovedale
1,141 sq. ft | \$479,900



Suite 210 | Hadleigh
1,147 sq. ft | \$494,900



Suite 314 | Bredon
1,190 sq. ft | \$542,900

LOCATED IN THE HEART OF WILLIAMSBURG TOWN CENTRE, THIS BRAND NEW 4-STORY MID-RISE CONDOMINIUM IS ACROSS THE STREET FROM A PEDESTRIAN-FRIENDLY PROMENADE OF SHOPS, RESTAURANTS AND SERVICES – ALL CONVENIENTLY LOCATED TO SIMPLIFY YOUR BUSY LIFESTYLE!

CONTACT US TODAY!

Stacey Chaves Broker

519-240-3380

stacey@makeamove.ca

Rendering is Artist's concept only. Prices subject to change. E.&O.E. October 2020